

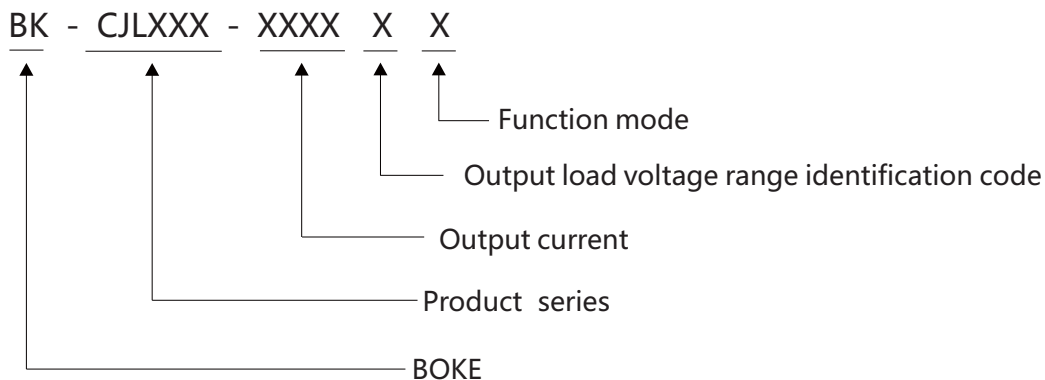
**FEATURES**

- 1.180-264VAC input
- 2.Built in active PFC function,high PF,low THD
- 3.Stanby power consumption <0.5W to turn off dimmable port
- 4.Built in 12VDC VCC output, maximum output current 100mA
- 5.Built in 1-10VDC/10V PWM dimming function
- 6.Constant current mode output with multiple levels selectable by DIP.switch
- 7.Supporting multi-power supplies synchronous dimming connected in parallel
- 8.Cooling by free air convection
- 9.5 years warranty

**APPLICATION**

- 1.LED indoor lighting
- 2.LED office lighting
- 3.LED architectural lighting
- 4.LED commercial lighting

**MODEL CODE**

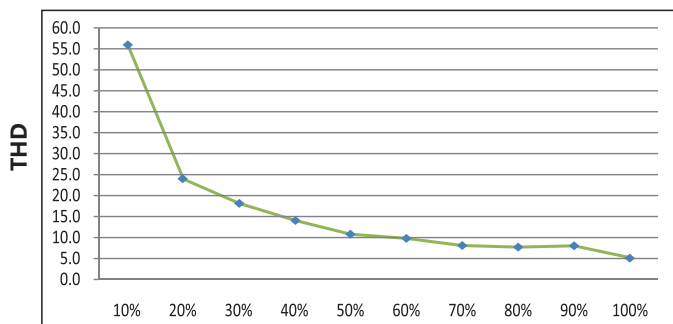


<b>ELECTRICAL SPECIFICATION</b>					
<b>MODEL</b>	BK-CJL030-0750AM	BK-CJL040-1050AM	BK-CJL050-1250AM	BK-CJL060-1650AM	BK-CJL080-2000AM
<b>OUTPUT</b>					
DC current	0.3-0.75A	0.6-1.05A	0.8-1.25A	1.2-1.65A	1.55-2A
DC voltage range	6-42V	6-42V	6-42V	6-42V	6-42V
Rated power	30W Max	30W Max	50.4W Max	63W Max	80W Max
Voltage ripple & noise note.2	≤200mV(Vpp)	≤300mV(Vpp)	≤300mV(Vpp)	≤200mV(Vpp)	≤200mV(Vpp)
Current ripple & noise	≤30mA(RMS)	≤30mA(RMS)	≤30mA(RMS)	≤30mA(RMS)	≤30mA(RMS)
Constnt current ADJ. range	DIP S.W	DIP S.W	DIP S.W	DIP S.W	DIP S.W
Constant current accuracy	±20mA	±20mA	±20mA	±30mA	±40mA
Line regulation	±20mA	±20mA	±20mA	±30mA	±40mA
Load regulation	±20mA	±20mA	±20mA	±30mA	±40mA
1-10V port input current	< 1mA(When DIM+ is shorted with DIM- )				
VCC port output voltage&current	12.6VDC±5% 100mA Max.				
<b>INPUT</b>					
Rated voltage	200-240VAC 200-240VDC				
Input AC voltage range	180-264VAC				
Input DC voltage range	180-264VDC				
Frequency range	47-63Hz				
Power factor	PF>0.95 @ 230VAC/full load,PF>0.90 @ 230VAC/>30% load				
Total harmonic distortion	THD<10% @ 230VAC/full load,THD<20% @ 230VAC/>30% load				
Efficiency (Typ.)	88%	89%	89%	90%	90%
Standby power note.3	<0.5W @ 230Vac	<0.5W @ 230Vac	<0.5W @ 230Vac	<0.5W @ 230Vac	<0.5W @ 230Vac
Input current	<0.2A @ 230Vac	<0.3A @ 230Vac	<0.35A @ 230Vac	<0.4A @ 230Vac	<0.5A @ 230Vac
Inrush current(Typ.)	Cold start <30A(Twidth=150us measured at 50% Ipeak) @ 230Vac.				
Max. No. of PSUs on 16A circuit breaker	B:25PCS,C:32PCS	B:37PCS,C:45PCS	B:33PCS,C:40PCS	B:26PCS,C:32PCS	B:26PCS,C:32PCS
Turn on delay	<0.5S @ 230Vac				
<b>PROTECTION</b>					
Short circuit	Hiccup,recovers automatically after environment temperature declines				
Max output voltage	50V				
Over temperature	Hiccup,recovers automatically after fult condition is removed				
<b>ENVIRONMENT</b>					
Operation temperature	-20-60°C	-20-55°C	-20-55°C	-20-60°C	-20-60°C
Operation humidity	10-90% RH non-condensing				
Storage temperature/humidity	-40-80°C 5-95% RH				
IP class	IP20				
Vibration	10~500Hz,5G 12min./1cycle,period for 72min. each along X,Y,Z axes				
Tc	Tc=90°C(Ta=60°C)	Tc=90°C(Ta=55°C)	Tc=90°C(Ta=55°C)	Tc=90°C(Ta=60°C)	Tc=90°C(Ta=60°C)
MTBF	500000H,MIL-HDBK-217F(25°C)				
<b>EMC</b>					
EMC emission Note.4	Compliance to EN55015,GB17743,EN61000-3-2 Class C(≥30% load),EN61000-3-3				
EMC immunity	Compliance to EN61000-4-2,3,4,5,6,8,1,EN61547,surge:DM 2.5KV CM 2.5KV				
<b>SAFETY</b>					
Safety standards	EN61347-1/2-13,GB19510.1/14,EN62384,IEEE1789				
Dali standards	N/A				
Certificate	CE-SUD ENEC CCC SAA RCM				
Withstand voltage	I/P-O/P:3750VAC,I/P-FG:1750VAC,O/P-FG:500VAC.				
Leakage current	<0.7mA @ 230Vac				
Isolation resistance	I/P-O/P:100MΩ/500Vdc/25°C/70% RH				
<b>PACKAGE</b>					
Environmental protection	RoHS				
Input connection	PCB connector/4PIN/orange+orange+gray+gray/0.75-1.5mm <sup>2</sup>				
Output connection	PCB connector/5PIN/black+red+gray+green+red/0.5-0.75mm <sup>2</sup>				
<b>NOTE</b>	1.All parameter are measured at 230VAC input,rated load and 25°C of ambient temperature. 2.Ripple & Noise are measured at 20MHz of bandwidth by using a 12" twisted pair-wire terminated with a 0.1uF & 47uF paralld capacitor. 3.Stand-by power consumption is measured at dimmable off condition. 4.The power supply is considers as a compent that will be operated in combination with final equipment.Since EMC performance will be affected by the complete installation the final equipment manfactures must re-quality EMC directive on the complete installation again.				

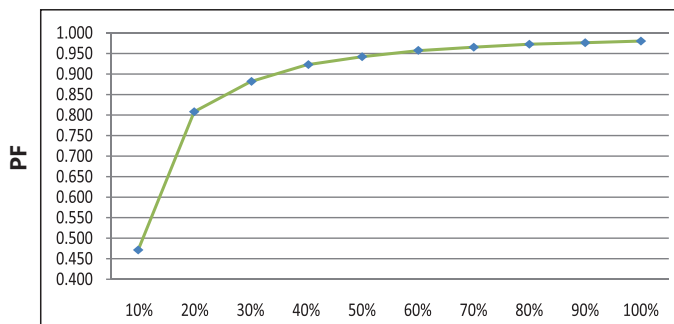
## Electrical characteristics

### BK-CJL030-0750AM Electrical characteristics(40V/0.75A)

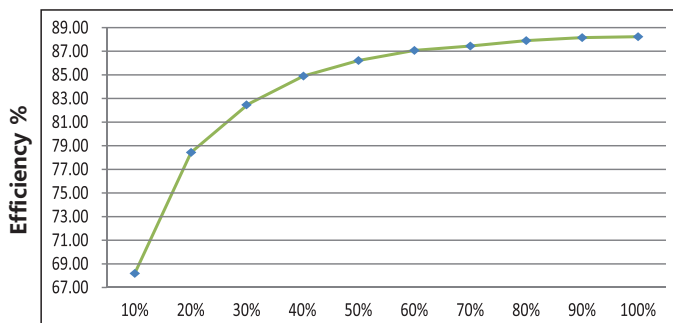
Total harmonic distortion vs Load characteristic curve



Power Factor vs LOAD Characteristic curve

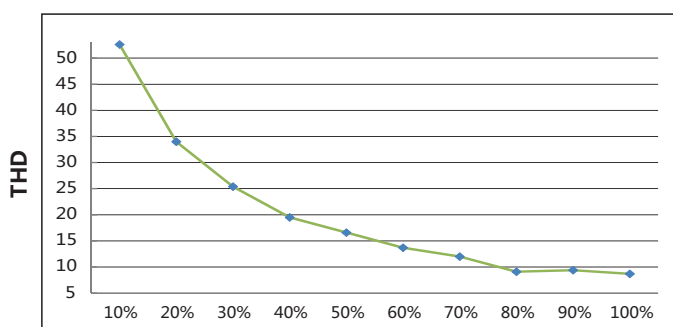


Efficiency vs Load characteristic curve

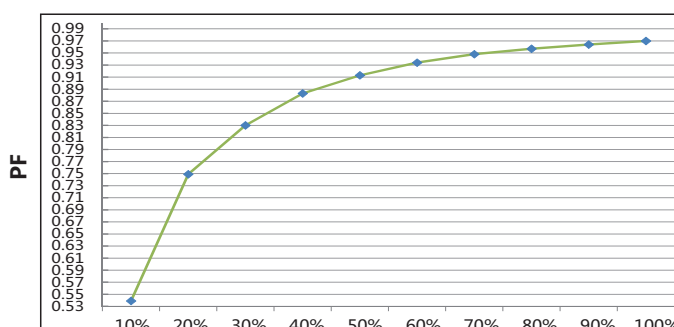


### BK-CJL040-1050AM Electrical characteristics(40V/1.05A)

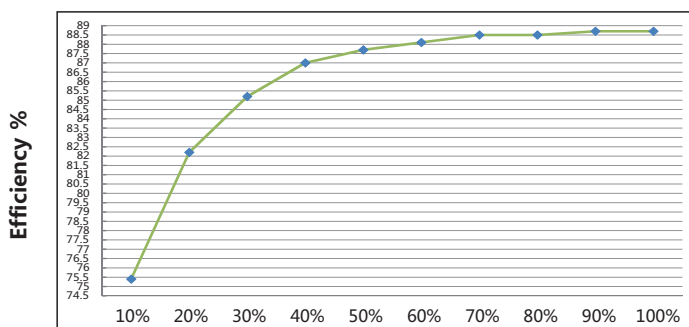
Total harmonic distortion vs Load characteristic curve



Power Factor vs LOAD Characteristic curve



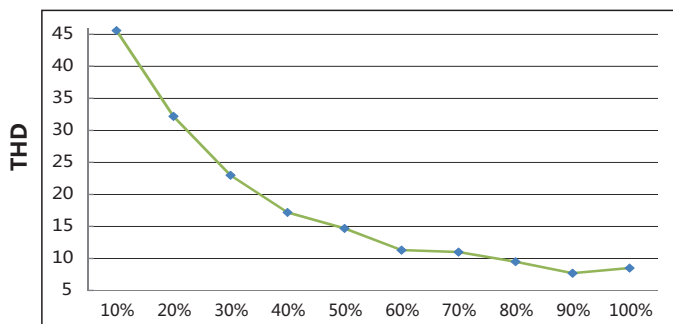
Efficiency vs Load characteristic curve



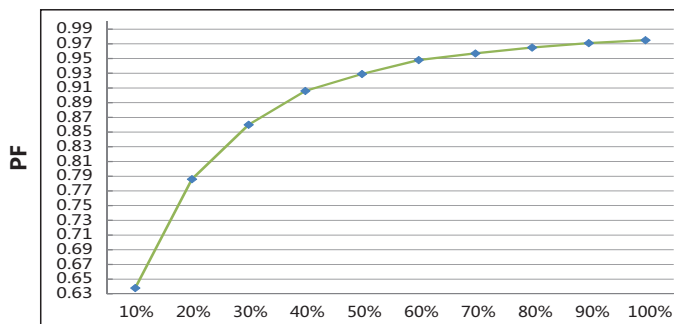
## Electrical characteristics

### BK-CJL050-1250AM Electrical characteristics(40V/1.25A)

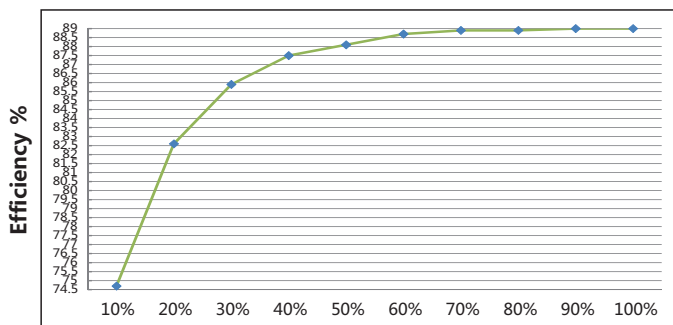
Total harmonic distortion vs Load characteristic curve



Power Factor vs LOAD Characteristic curve

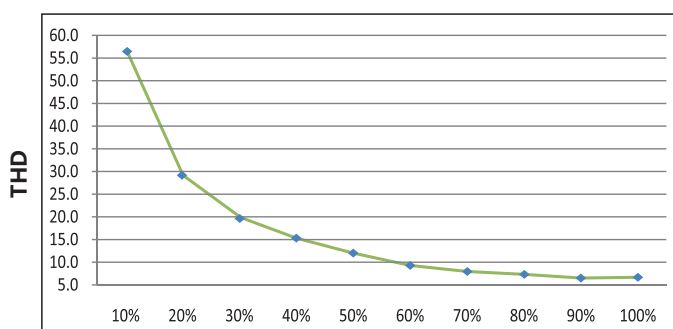


Efficiency vs Load characteristic curve

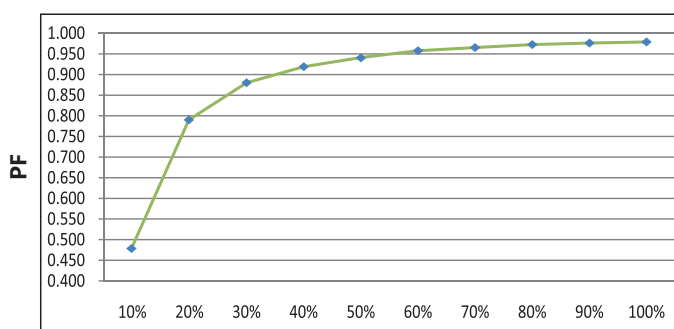


### BK-CJL060-1650AM Electrical characteristics(42V/1.5A)

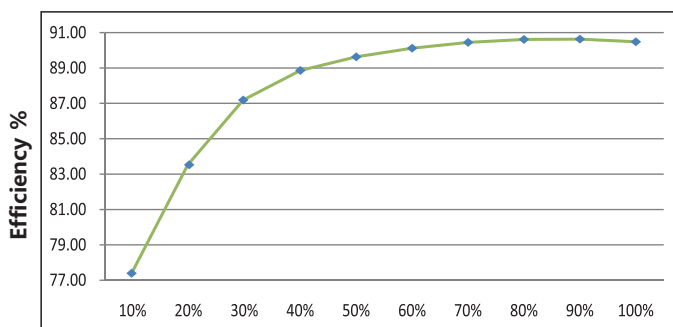
Total harmonic distortion vs Load characteristic curve



Power Factor vs LOAD Characteristic curve



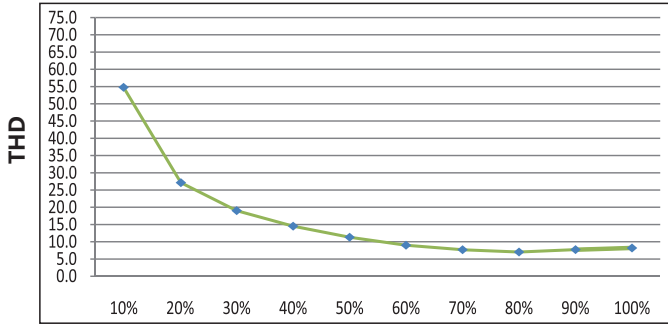
Efficiency vs Load characteristic curve



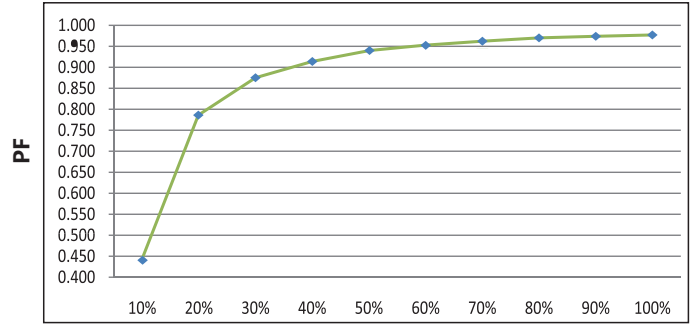
Electrical characteristics

BK-CJL080-2000AM Electrical characteristics(40V/2A)

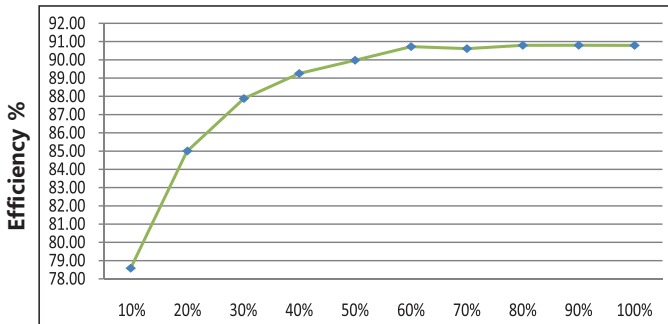
Total harmonic distortion vs Load characteristic curve



Power Factor vs LOAD Characteristic curve



Efficiency vs Load characteristic curve



LABEL

BK-CJL030-0750AM

**INPUT** AC-L AC-N NC  
 www.powerboke.com  
 DONGGUAN BOKE LED DRIVERS CO.,LTD  
 Address: Building H, Julong Industrial Park, Melting Community, Huangjiang Town, 523763 Dongguan, CHINA  
 MADE IN CHINA

**Dimmable Constant Current LED Driver**  
 For LED modules use only  
**MODEL: BK-CJL030-0750AM**  
 INPUT: 200-240V ~ 50/60Hz 0.2A Max. λ: 0.95  
 OUTPUT: 50V ~ Max. 30W Max.  
 Other ratings see selection sheet

FLICKER FREE  
 CE, RoHS, SELV, RoHS  
 tc: 90°C, ta: 60°C

Pwr(W)	Pwr(W) Input	Iload(mA)	Switch				
			Output	1	2	3	4
14.7	12.6	300	6-42	ON	ON	ON	ON
17.0	14.7	350	6-42	ON	ON	ON	ON
18.3	16.8	400	6-42	ON	ON	ON	ON
21.6	18.9	450	6-42	ON	ON	ON	ON
24.0	21.0	500	6-42	ON	ON	ON	ON
26.3	23.1	550	6-42	ON	ON	ON	ON
28.7	25.2	600	6-42	ON	ON	ON	ON
31.1	27.3	650	6-42	ON	ON	ON	ON
33.5	29.4	700	6-42	ON	ON	ON	ON
34.2	30.0	750	6-40	ON	ON	ON	ON

**OUTPUT** DIM, VCC, GND, LED-, LED+  
 DIM is connected to the SELV source  
 Do not connect LED-/LED- and VCC/DIM/GND wires  
 SEC wire prep: 0.5-0.75mm<sup>2</sup>

BK-CJL040-1050AM

**INPUT** AC-L AC-N NC  
 www.powerboke.com  
 DONGGUAN BOKE LED DRIVERS CO.,LTD  
 Address: Building H, Julong Industrial Park, Melting Community, Huangjiang Town, 523763 Dongguan, CHINA  
 MADE IN CHINA

**Dimmable Constant Current LED Driver**  
 For LED modules use only  
**MODEL: BK-CJL040-1050AM**  
 INPUT: 200-240V ~ 50/60Hz 0.3A Max. λ: 0.95  
 OUTPUT: 50V ~ Max. 42W Max.  
 Other ratings see selection sheet

FLICKER FREE  
 CE, RoHS, SELV, RoHS  
 tc: 90°C, ta: 55°C

Pwr(W)	Pwr(W) Input	Iload(mA)	Switch				
			Output	1	2	3	4
29.0	25.2	600	6-42	ON	ON	ON	ON
31.0	27.3	650	6-42	ON	ON	ON	ON
33.0	29.4	700	6-42	ON	ON	ON	ON
35.0	31.5	750	6-42	ON	ON	ON	ON
38.0	33.6	800	6-42	ON	ON	ON	ON
40.0	35.7	850	6-42	ON	ON	ON	ON
43.0	37.8	900	6-42	ON	ON	ON	ON
45.0	39.9	950	6-42	ON	ON	ON	ON
47.0	42.0	1000	6-42	ON	ON	ON	ON
50.0	44.1	1050	6-42	ON	ON	ON	ON
52.0	46.2	1100	6-42	ON	ON	ON	ON
55.0	48.3	1150	6-42	ON	ON	ON	ON
57.0	50.4	1200	6-42	ON	ON	ON	ON
58.0	50.0	1200	6-40	ON	ON	ON	ON

**OUTPUT** DIM, VCC, GND, LED-, LED+  
 DIM is connected to the SELV source  
 Do not connect LED-/LED- and VCC/DIM/GND wires  
 SEC wire prep: 0.5-0.75mm<sup>2</sup>

BK-CJL050-1250AM

**INPUT** AC-L AC-N NC  
 www.powerboke.com  
 DONGGUAN BOKE LED DRIVERS CO.,LTD  
 Address: Building H, Julong Industrial Park, Melting Community, Huangjiang Town, 523763 Dongguan, CHINA  
 MADE IN CHINA

**Dimmable Constant Current LED Driver**  
 For LED modules use only  
**MODEL: BK-CJL050-1250AM**  
 INPUT: 200-240V ~ 50/60Hz 0.35A Max. λ: 0.95  
 OUTPUT: 50V ~ Max. 50W Max.  
 Other ratings see selection sheet

FLICKER FREE  
 CE, RoHS, SELV, RoHS  
 tc: 90°C, ta: 55°C

Pwr(W)	Pwr(W) Input	Iload(mA)	Switch				
			Output	1	2	3	4
38.0	33.6	800	6-42	ON	ON	ON	ON
40.0	35.7	850	6-42	ON	ON	ON	ON
42.0	37.8	900	6-42	ON	ON	ON	ON
45.0	39.9	950	6-42	ON	ON	ON	ON
47.0	42.0	1000	6-42	ON	ON	ON	ON
50.0	44.1	1050	6-42	ON	ON	ON	ON
52.0	46.2	1100	6-42	ON	ON	ON	ON
55.0	48.3	1150	6-42	ON	ON	ON	ON
57.0	50.4	1200	6-42	ON	ON	ON	ON
58.0	50.0	1200	6-40	ON	ON	ON	ON

**OUTPUT** DIM, VCC, GND, LED-, LED+  
 DIM is connected to the SELV source  
 Do not connect LED-/LED- and VCC/DIM/GND wires  
 SEC wire prep: 0.5-0.75mm<sup>2</sup>

BK-CJL060-1650AM

**INPUT** AC-L AC-N NC  
 www.powerboke.com  
 DONGGUAN BOKE LED DRIVERS CO.,LTD  
 Address: Building H, Julong Industrial Park, Melting Community, Huangjiang Town, 523763 Dongguan, CHINA  
 MADE IN CHINA

**Dimmable Constant Current LED Driver**  
 For LED modules use only  
**MODEL: BK-CJL060-1650AM**  
 INPUT: 200-240V ~ 50/60Hz 0.4A Max. λ: 0.95  
 OUTPUT: 50V ~ Max. 63W Max.  
 Other ratings see selection sheet

FLICKER FREE  
 CE, RoHS, SELV, RoHS  
 tc: 90°C, ta: 60°C

Pwr(W)	Pwr(W) Input	Iload(mA)	Switch				
			Output	1	2	3	4
63.0	54.0	1260	6-42	ON	ON	ON	ON
65.0	56.1	1310	6-42	ON	ON	ON	ON
67.0	58.2	1360	6-42	ON	ON	ON	ON
69.0	60.3	1410	6-42	ON	ON	ON	ON
71.0	62.4	1460	6-42	ON	ON	ON	ON
73.0	64.5	1510	6-42	ON	ON	ON	ON
75.0	66.6	1560	6-42	ON	ON	ON	ON
77.0	68.7	1610	6-42	ON	ON	ON	ON
79.0	70.8	1660	6-42	ON	ON	ON	ON
81.0	72.9	1710	6-42	ON	ON	ON	ON
83.0	75.0	1760	6-42	ON	ON	ON	ON
85.0	77.1	1810	6-42	ON	ON	ON	ON
87.0	79.2	1860	6-42	ON	ON	ON	ON
89.0	81.3	1910	6-42	ON	ON	ON	ON
91.0	83.4	1960	6-42	ON	ON	ON	ON
93.0	85.5	2010	6-42	ON	ON	ON	ON
95.0	87.6	2060	6-42	ON	ON	ON	ON
97.0	89.7	2110	6-42	ON	ON	ON	ON
99.0	91.8	2160	6-42	ON	ON	ON	ON
101.0	93.9	2210	6-42	ON	ON	ON	ON
103.0	96.0	2260	6-42	ON	ON	ON	ON
105.0	98.1	2310	6-42	ON	ON	ON	ON
107.0	100.2	2360	6-42	ON	ON	ON	ON
109.0	102.3	2410	6-42	ON	ON	ON	ON
111.0	104.4	2460	6-42	ON	ON	ON	ON
113.0	106.5	2510	6-42	ON	ON	ON	ON
115.0	108.6	2560	6-42	ON	ON	ON	ON
117.0	110.7	2610	6-42	ON	ON	ON	ON
119.0	112.8	2660	6-42	ON	ON	ON	ON
121.0	114.9	2710	6-42	ON	ON	ON	ON
123.0	117.0	2760	6-42	ON	ON	ON	ON
125.0	119.1	2810	6-42	ON	ON	ON	ON

**OUTPUT** DIM, VCC, GND, LED-, LED+  
 DIM is connected to the SELV source  
 Do not connect LED-/LED- and VCC/DIM/GND wires  
 SEC wire prep: 0.5-1.0mm<sup>2</sup>

BK-CJL080-2000AM

**INPUT** AC-L AC-N NC  
 www.powerboke.com  
 DONGGUAN BOKE LED DRIVERS CO.,LTD  
 Address: Building H, Julong Industrial Park, Melting Community, Huangjiang Town, 523763 Dongguan, CHINA  
 MADE IN CHINA

**Dimmable Constant Current LED Driver**  
 For LED modules use only  
**MODEL: BK-CJL080-2000AM**  
 INPUT: 200-240V ~ 50/60Hz 0.5A Max. λ: 0.95  
 OUTPUT: 50V ~ Max. 80W Max.  
 Other ratings see selection sheet

FLICKER FREE  
 CE, RoHS, SELV, RoHS  
 tc: 90°C, ta: 60°C

Pwr(W)	Pwr(W) Input	Iload(mA)	Switch				
			Output	1	2	3	4
71.0	62.1	1950	6-42	ON	ON	ON	ON
73.0	64.2	2000	6-42	ON	ON	ON	ON
75.0	66.3	2050	6-42	ON	ON	ON	ON
77.0	68.4	2100	6-42	ON	ON	ON	ON
79.0	70.5	2150	6-42	ON	ON	ON	ON
81.0	72.6	2200	6-42	ON	ON	ON	ON
83.0	74.7	2250	6-42	ON	ON	ON	ON
85.0	76.8	2300	6-42	ON	ON	ON	ON
87.0	78.9	2350	6-42	ON	ON	ON	ON
89.0	81.0	2400	6-42	ON	ON	ON	ON
91.0	83.1	2450	6-42	ON	ON	ON	ON
93.0	85.2	2500	6-42	ON	ON	ON	ON
95.0	87.3	2550	6-42	ON	ON	ON	ON
97.0	89.4	2600	6-42	ON	ON	ON	ON
99.0	91.5	2650	6-42	ON	ON	ON	ON
101.0	93.6	2700	6-42	ON	ON	ON	ON
103.0	95.7	2750	6-42	ON	ON	ON	ON
105.0	97.8	2800	6-42	ON	ON	ON	ON
107.0	99.9	2850	6-42	ON	ON	ON	ON
109.0	102.0	2900	6-42	ON	ON	ON	ON
111.0	104.1	2950	6-42	ON	ON	ON	ON
113.0	106.2	3000	6-42	ON	ON	ON	ON
115.0	108.3	3050	6-42	ON	ON	ON	ON
117.0	110.4	3100	6-42	ON	ON	ON	ON
119.0	112.5	3150	6-42	ON	ON	ON	ON
121.0	114.6	3200	6-42	ON	ON	ON	ON
123.0	116.7	3250	6-42	ON	ON	ON	ON
125.0	118.8	3300	6-42	ON	ON	ON	ON

**OUTPUT** DIM, VCC, GND, LED-, LED+  
 DIM is connected to the SELV source  
 Do not connect LED-/LED- and VCC/DIM/GND wires  
 SEC wire prep: 0.5-1.0mm<sup>2</sup>

## DIP S.W Select output current table

BK-CJL030-0750AM

Switching selection sheet							
Pin(W) typ.	Output			Switch			
	Prated(W)	Irated(mA)	Voltage(Vdc)	1	2	3	4
14.7	12.6	300	6-42	■	ON	ON	ON
17.0	14.7	350	6-42	ON	■	ON	ON
19.3	16.8	400	6-42	■	■	ON	ON
21.6	18.9	450	6-42	■	ON	■	ON
24.0	21.0	500	6-42	■	■	■	ON
26.3	23.1	550	6-42	ON	ON	ON	■
28.7	25.2	600	6-42	■	■	ON	■
31.1	27.3	650	6-42	■	ON	■	■
33.5	29.4	700	6-42	ON	■	■	■
34.2	30.0	750	6-40	■	■	■	■

Before use,always check dipswitch settings!

BK-CJL040-1050AM

Switching selection sheet							
Pin(W) typ.	Output			Switch			
	Prated(W)	Irated(mA)	Voltage(Vdc)	1	2	3	4
29.0	25.2	600	6-42	■	ON	ON	ON
31.0	27.3	650	6-42	ON	■	ON	ON
33.5	29.4	700	6-42	■	■	ON	ON
36.0	31.5	750	6-42	■	ON	■	ON
38.0	33.6	800	6-42	■	■	■	ON
40.5	35.7	850	6-42	ON	ON	ON	■
43.0	37.8	900	6-42	■	■	ON	■
45.0	39.9	950	6-42	■	ON	■	■
47.5	42.0	1000	6-42	ON	■	■	■
47.5	42.0	1050	6-40	■	■	■	■

Before use,always check dipswitch settings!

BK-CJL050-1250AM

Switching selection sheet							
Pin(W) typ.	Output			Switch			
	Prated(W)	Irated(mA)	Voltage(Vdc)	1	2	3	4
38.0	33.6	800	6-42	■	ON	ON	ON
40.5	35.7	850	6-42	ON	■	ON	ON
42.5	37.8	900	6-42	■	■	ON	ON
45.0	39.9	950	6-42	■	ON	■	ON
47.5	42.0	1000	6-42	■	■	■	ON
50.0	44.1	1050	6-42	ON	ON	ON	■
52.0	46.2	1100	6-42	■	■	ON	■
54.5	48.3	1150	6-42	■	ON	■	■
57.0	50.4	1200	6-42	ON	■	■	■
56.5	50.0	1250	6-40	■	■	■	■

Before use,always check dipswitch settings!

BK-CJL060-1650AM

Switching selection sheet							
Pin(W) typ.	Output			Switch			
	Prated(W)	Irated(mA)	Voltage(Vdc)	1	2	3	4
55.8	50.4	1200	6-42	■	ON	ON	ON
58.1	52.5	1250	6-42	ON	■	ON	ON
60.3	54.6	1300	6-42	■	■	ON	ON
62.6	56.7	1350	6-42	■	ON	■	ON
64.9	58.8	1400	6-42	■	■	■	ON
67.3	60.9	1450	6-42	ON	ON	ON	■
69.6	63.0	1500	6-42	■	■	ON	■
68.6	62.0	1550	6-40	■	ON	■	■
67.5	60.8	1600	6-38	ON	■	■	■
66.3	59.4	1650	6-36	■	■	■	■

Before use,always check dipswitch settings!

BK-CJL080-2000AM

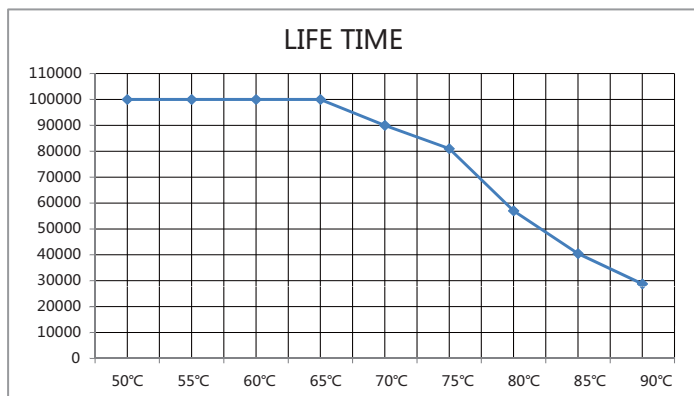
Switching selection sheet							
Pin(W) typ.	Output			Switch			
	Prated(W)	Irated(mA)	Voltage(Vdc)	1	2	3	4
71.6	65.1	1550	6-42	■	ON	ON	ON
73.8	67.2	1600	6-42	ON	■	ON	ON
76.0	69.3	1650	6-42	■	■	ON	ON
78.3	71.4	1700	6-42	■	ON	■	ON
80.6	73.5	1750	6-42	■	■	■	ON
82.8	75.6	1800	6-42	ON	ON	ON	■
85.1	77.7	1850	6-42	■	■	ON	■
87.4	79.8	1900	6-42	■	ON	■	■
87.7	80.0	1950	6-41	ON	■	■	■
88.2	80.0	2000	6-40	■	■	■	■

Before use,always check dipswitch settings!

Remark: ■ this current is factory default.

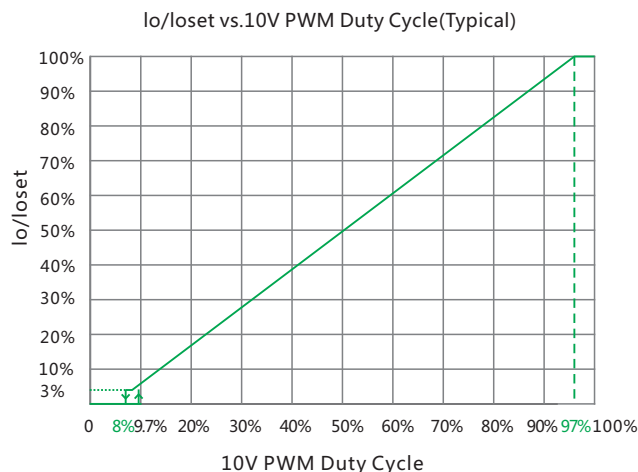
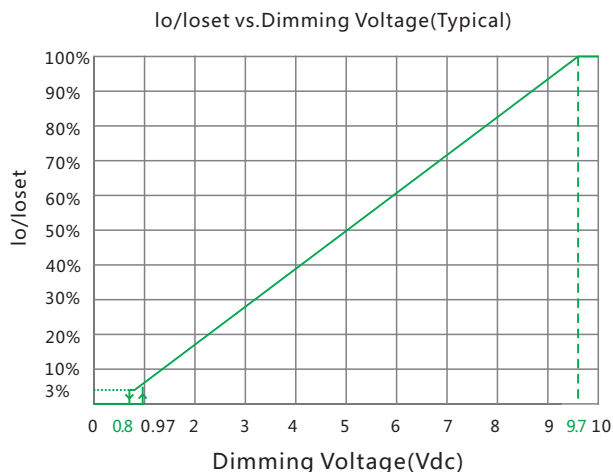
■ this channel is off.

## Lifetime curve map

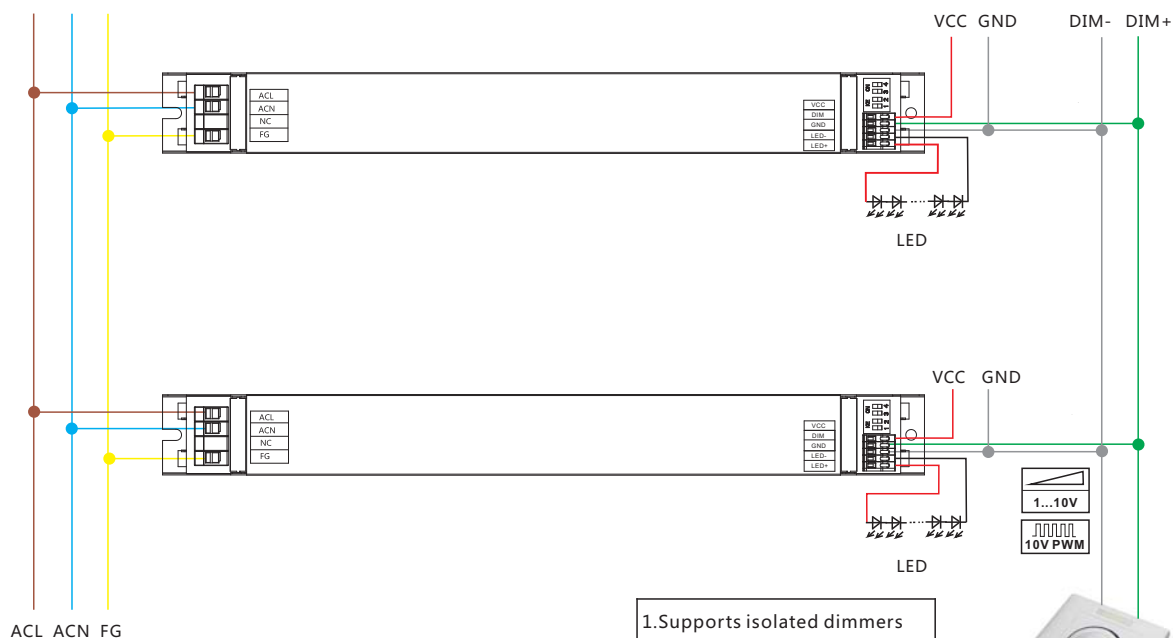


## Dimming function

### 1~10VDC / 10V PWM signal dimming



\*Frequency range: 100Hz-3KHz



1. Supports isolated dimmers
2. Passive dimmers need to be evaluated for testing
3. Non-isolated dimmers are not supported

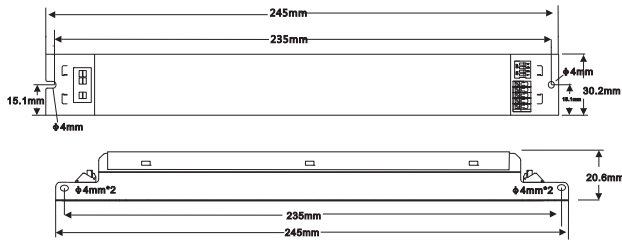
-DIM is connected to the SELV source  
 -Do not connect LED+ / LED- and VCC / DIM / GND wires

### 1-10VDC/10V PWM dimming function application notes

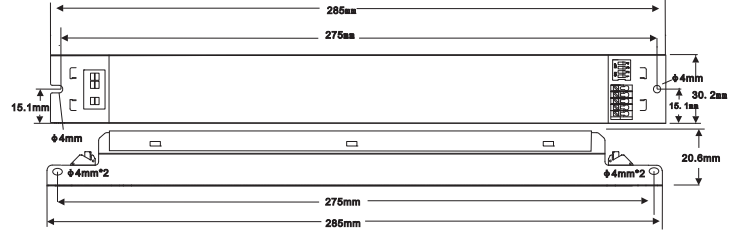
1. Please carry out the sample or small batch test before the batch purchase.
2. The number of drives and the length of wire connections are determined by the following factors:
  - a. Current output capacity of the dimmer.
  - b. The interface of the driver consumes current, this product is less than 1mA.
  - c. The size of the connection wire, and is recommended to use less than 20AWG;
  - d. Install environmental interference, avoid wiring with high voltage or interference source. If you can't avoid it, you can consider using shield wire.
3. It is recommended that the number of drives and the dimming connection length are: ≤10 PCS, ≤20m.
4. It is recommended to use a dimmer with active, isolated and strong output current capacity. This product cannot use a non-isolation dimmer.
5. This product is compatible with various active or passive dimmers. If a few dimmers are not compatible, it is a normal case and can be contacted us for confirmation.

## Mechanical Specification

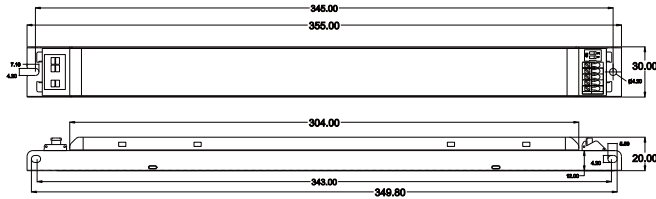
BK-CJL030



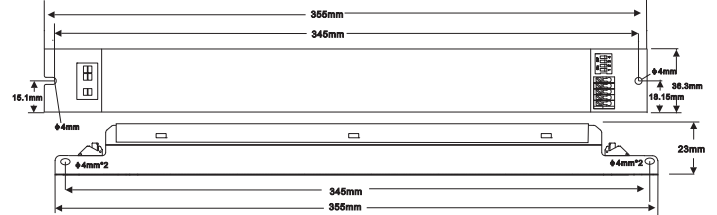
BK-CJL040/CJL050



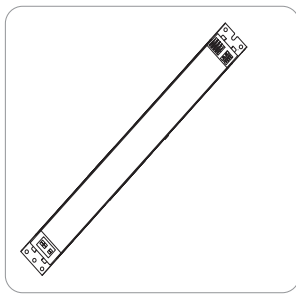
BK-CJL060



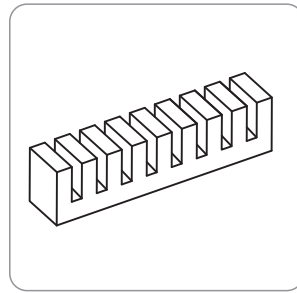
BK-CJL080



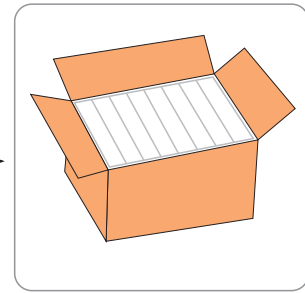
## Product package



Product



Pearl wool



8pcs\*6layer=48pcs/CTN)

8pcs\*5layer=40pcs/CTN)

7pcs\*5layer=35pcs/CTN)

Product series	Product size	Weight/pcs	Carton size	Weight/box	PACKING
CJL030	L245*W30.2*H20.6mm	180g	L410*W295*H200mm	9.6KG/CTN	48pcs/CTN
CJL040	L285*W30.2*H20.6mm	228g	L415*W330*H190mm	10.3KG/CTN	40pcs/CTN
CJL050	L285*W30.2*H20.6mm	235g	L415*W330*H190mm	10.6KG/CTN	40pcs/CTN
CJL060	L355*W30.0*H20.0mm	270g	L415*W330*H190mm	10.5KG/CTN	35pcs/CTN
CJL080	L355*W36.3*H23.0mm	360g	L440*W375*H222mm	14KG/CTN	35pcs/CTN

## Sales&Technical Support

Bright Green Connect Limited  
Unit 3,Oyster Park  
Byfleet  
Surrey  
KT14 7AX

☎ +44(0) 1932 497992  
✉ contact@brightgreenconnect.com  
🌐 brightgreenconnect.com